



# EAST PARK ENERGY

**East Park Energy**

EN010141

## **Environmental Statement Volume 3 - Figures**

Chapter 6 Figures - Part 2 of 2

**Document Reference: EN010141/DR/6.3**

Infrastructure Planning (Applications: Prescribed Forms and  
Procedure) Regulations 2009: Regulation 5(2)(a)

**September 2025**

Version P01

# EAST PARK ENERGY

Planning Act 2008

Infrastructure Planning (Applications: Prescribed  
Forms and Procedure) Regulations 2009

## Environmental Statement Volume 3 – Figures

### Chapter 6 Figures – Part 2 of 2

<b>APFP Regulation Reference:</b>	Regulation 5(2)(a)
<b>Planning Inspectorate Scheme Reference:</b>	EN010141
<b>Application Document Number:</b>	EN010141/DR/6.3
<b>Author:</b>	Axis PED Ltd

Version	Date	Status
P01	September 2025	DCO Submission

© AXIS P.E.D. Ltd 2025. All rights reserved.

This document and its accompanying documents contain information which is confidential and is intended only for the use of the client. If you are not one of the intended recipients any disclosure, copying, distribution or action taken in reliance on the contents of the information is strictly prohibited.

Unless expressly agreed, any reproduction of material from this document must be requested and authorised in writing from AXIS P.E.D. Ltd. Authorised reproduction of material must include all copyright and proprietary notices in the same form and manner as the original and must not be modified in any way. Acknowledgement of the source of the material must also be included in all references.



---


## ES Volume 3 – Chapter 6 Figures:

<b>Figure 6-14</b>	Extract from a map by Saxton, 1583 (Rev P01)
<b>Figure 6-15</b>	Extract from a map of Bedfordshire by Blaeu, 1662 (Rev P01)
<b>Figure 6-16</b>	Extract from a map of Huntingdonshire by Blaeu, 1662 (Rev P01)
<b>Figure 6-17</b>	Extract from a map of Bedford Hyett, 1815 (Rev P01)
<b>Figure 6-18</b>	Extract from a map of Wellingborough by Hyett, 1817 (Rev P01)
<b>Figure 6-19</b>	Extract from a map of the Parish of Keysoe, 1840 (Rev P01)
<b>Figure 6-20</b>	Site A overlain on extracts from OS maps dating 1883 to 1887 (Rev P01)
<b>Figure 6-21</b>	Site B overlain on extracts from OS maps dating 1883 to 1887 (Rev P01)
<b>Figure 6-22</b>	Site C overlain on extracts from OS maps dating 1883 to 1887 (Rev P01)
<b>Figure 6-23</b>	Site D overlain on extracts from OS maps dating 1883 to 1887 (Rev P01)
<b>Figure 6-24</b>	Northern part of Grid Connection overlain on extracts from OS maps dating 1883 to 1887 (Rev P01)
<b>Figure 6-25</b>	Southern part of Grid Connection overlain on extracts from OS maps dating 1883 to 1887 (Rev P01)
<b>Figure 6-26</b>	Site A overlain on extracts from OS maps dating 1958 to 1970 (Rev P01)
<b>Figure 6-27</b>	Site B overlain on extracts from OS maps dating 1958 to 1970 (Rev P01)

---

<b>Figure 6-28</b>	Site C overlain on extracts from OS maps dating 1958 to 1970 (Rev P01)
<b>Figure 6-29</b>	Site D overlain on extracts from OS maps dating 1958 to 1970 (Rev P01)
<b>Figure 6-30</b>	Northern part of Grid Connection overlain on extracts from OS maps dating 1958 to 1970 (Rev P01)
<b>Figure 6-31</b>	Southern part of Grid Connection overlain on extracts from OS maps dating 1958 to 1970 (Rev P01)
<b>Figure 6-32</b>	Sites A and B overlain on processed LiDAR imagery (Visualisation for Archaeological Topography) (Rev P01)
<b>Figure 6-33</b>	Sites C and D overlain on processed LiDAR imagery (Visualisation for Archaeological Topography) (Rev P01)
<b>Figure 6-34</b>	Grid Connection overlain on processed LiDAR imagery (Visualisation for Archaeological Topography) (Rev P01)
<b>Figure 6-35</b>	Field IDs within Sites A and B (Rev P01)
<b>Figure 6-36</b>	Field IDs within Sites C and D (Rev P01)



Figure	6-14
Extract from a map by Saxton, 1583	
<div>Legend</div> <div><div><div></div></div>Approximate Location of Order Limits</div>	
FOR	
N/A	
Drawn/checked:	26129
DWG no:	01/26129/ES/6.14/02
AOC Project No.:	GM/SO
<div><div><div>AOC</div><div>Archaeology Group</div></div><div></div><div>(C) AOC Archaeology Group 2025</div></div>	
SYSTEM	
SCALE	NOT TO SCALE
SCALE	





Figure

Extract from a map of Bedfordshire by Blaeu, 1662

Legend

Approximate Location of Order Limits

FOR

N/A

Drawn/checked:	26129
DWG no:	01/26129/ES/6.15/02
AOC Project No.:	GM/SO

**AOC**  
Archaeology  
Group  
(C) AOC Archaeology Group 2025

SYSTEM

SCALE NOT TO SCALE

SCALE

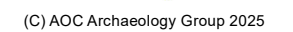




### Legend

FOR

<b>Drawn/checked:</b>	26129
<b>DWG no:</b>	01/26129/ES/6.17/02
<b>AOC Project No.:</b>	GM/SO



SYSTEM	
--------	--

SCALE NOT TO SCALE

SCALE

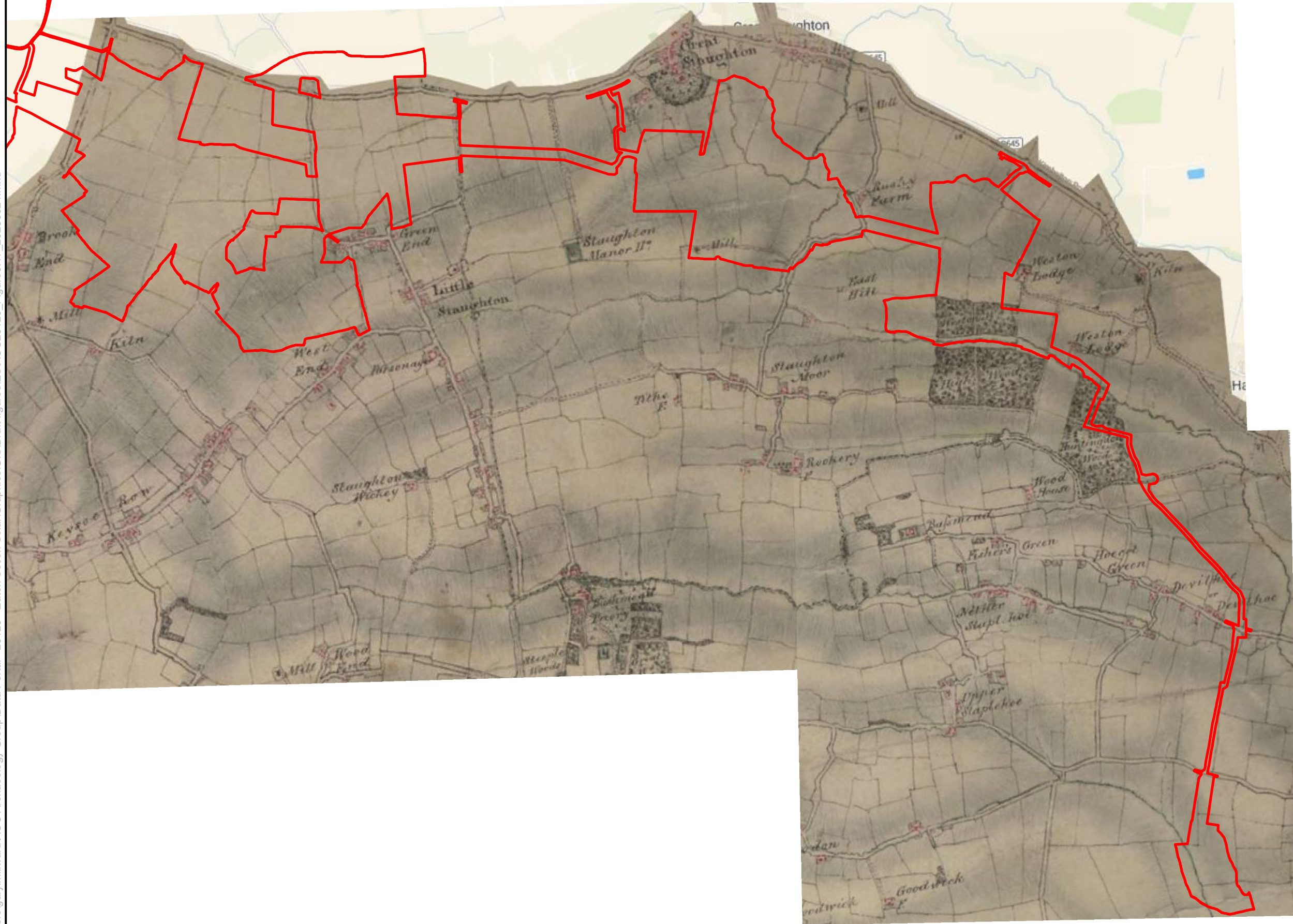






Figure		6-18
Extract from a map of Wellingborough by Hyett, 1817		
<div>Legend</div> <div><div></div>Order Limits</div>		
FOR		
N/A		
Drawn/checked:		26129
DWG no:		01/26129/ES/6.18/02
AOC Project No.:		GM/SO
<div><div>AOC</div><div>Archaeology Group</div><div>(C) AOC Archaeology Group 2025</div></div>		
SYSTEM		
SCALE		NOT TO SCALE
SCALE		

C:\Users\gary.millward\AOC Archaeology Group\Data Portal - 26129 - Eaton Socon Solar\Graphics\GIS\Draft figures\ES\AOC26129\_Figure6.19\_20250924.mxd

265000

264000

506000

507000

Figure 6-19

Extract from a tithe map of the Parish of Keysoe, 1840

Legend  
Order Limits

FOR

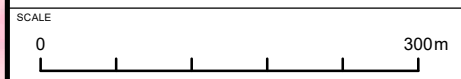
N/A

Drawn/checked:	26129
DWG no:	01/26129/ES/6.19/02
AOC Project No.:	GM/SO

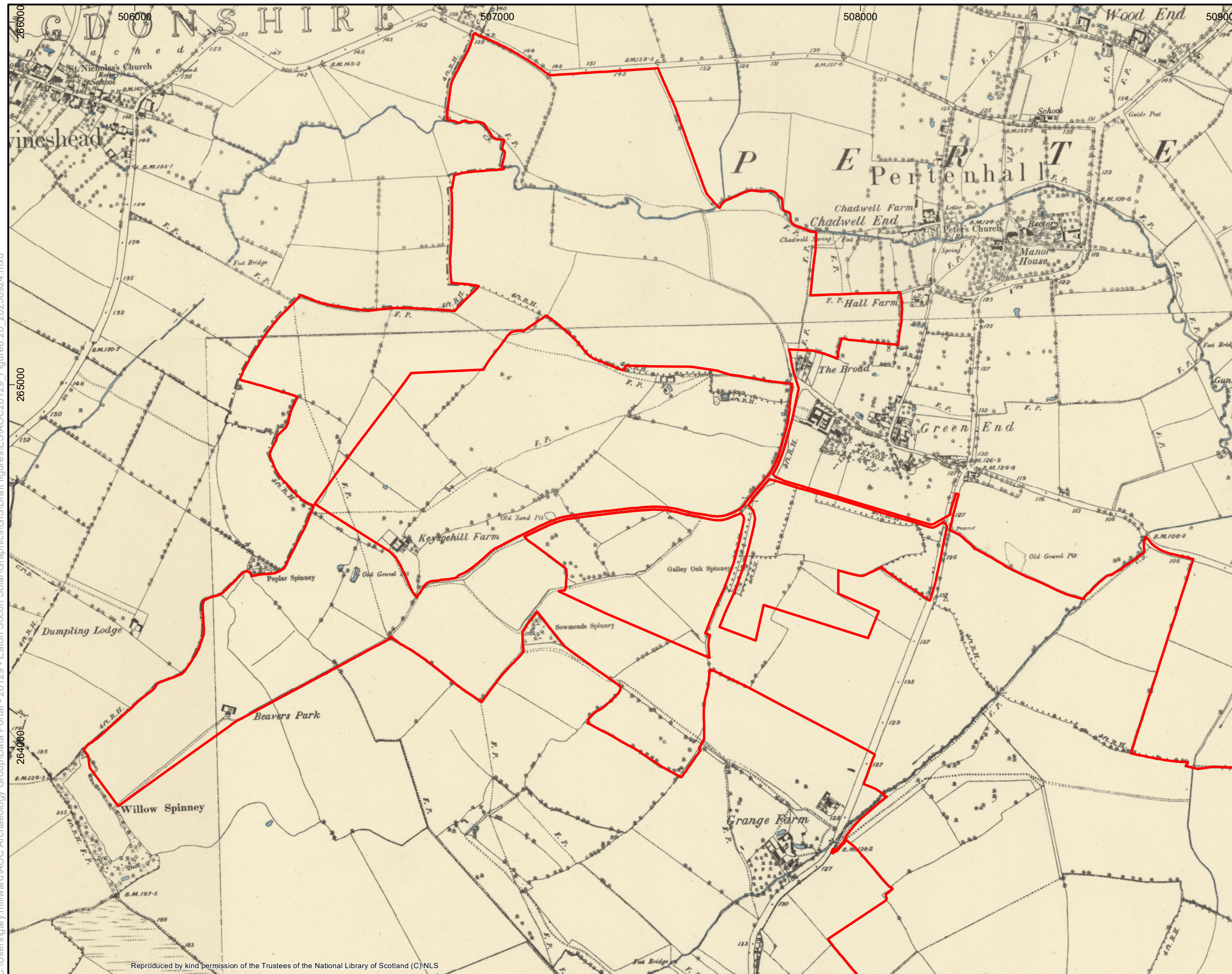


SYSTEM  
Coordinate System: British National Grid  
Projection: Transverse Mercator  
Datum: OSGB 1936

SCALE  
1:6,000 @ A3







Figure

6-20

Site A overlain on extracts from  
OS maps dating 1883 to 1887

### Legend

### ☐ Order Limits

FOR

N/A

**Drawn/checked:**

26129

DWG no:

01/26129/ES/6.20/02
---------------------

AOC Project No.:

GM/SO



(C) AOC Archaeology Group 2025



SYSTEM

Coordinate System: British National Grid  
Projection: Transverse Mercator  
Datum: OSGB 1936

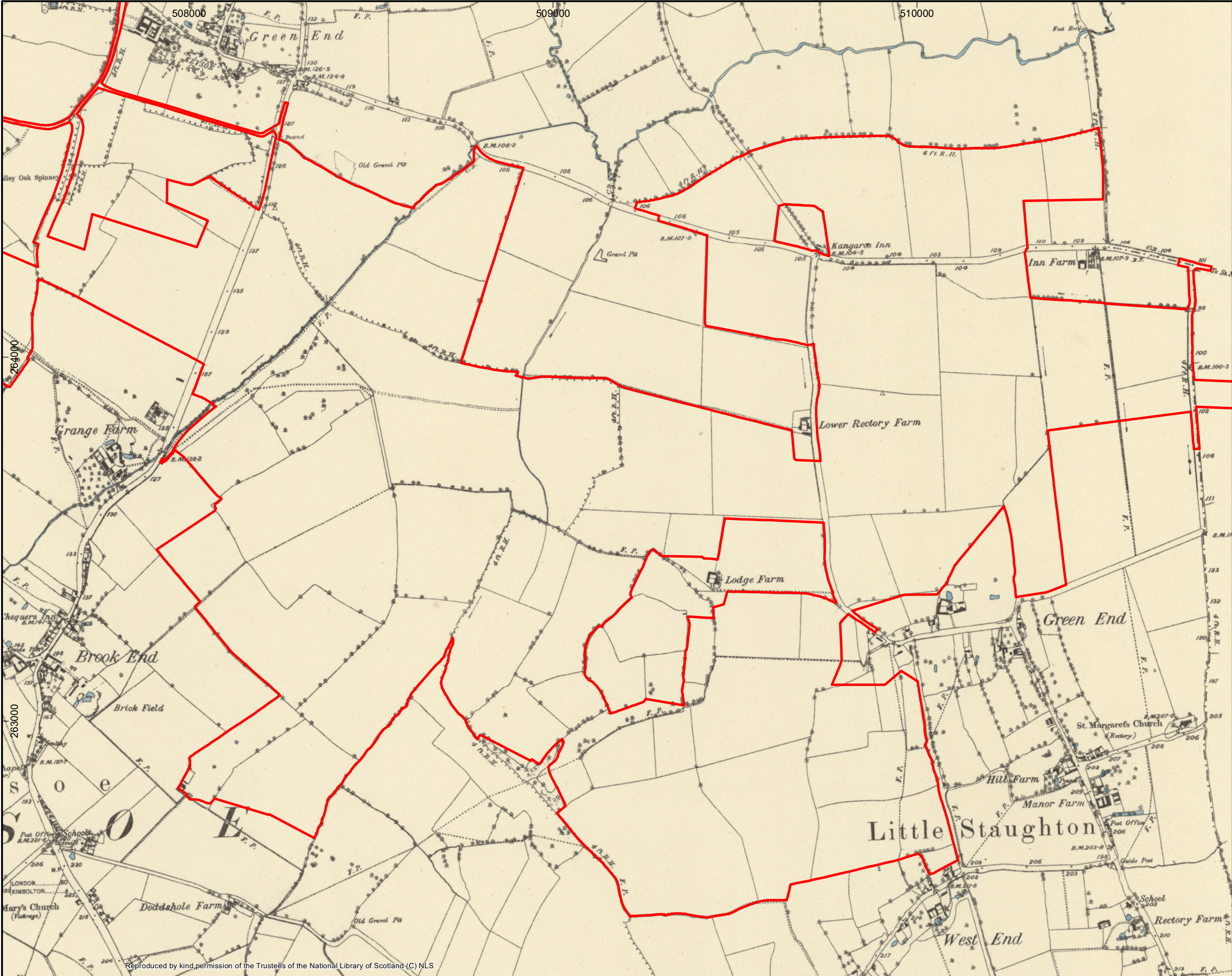
SCALE

1:10,000 @ A3

SCALE

Year	Number of individuals
1980	0
1985	100
1990	200
1995	300
2000	1000





Figure

6-21

Site B overlain on extracts from OS maps dating 1883 to 1887

**Legend**  
Order Limits

FOR  
  
N/A

Drawn/checked:	26129
DWG no:	01/26129/ES/6.21/01
AOC Project No.:	GM/SO

**AOC** Archaeology Group  
(C) AOC Archaeology Group 2025

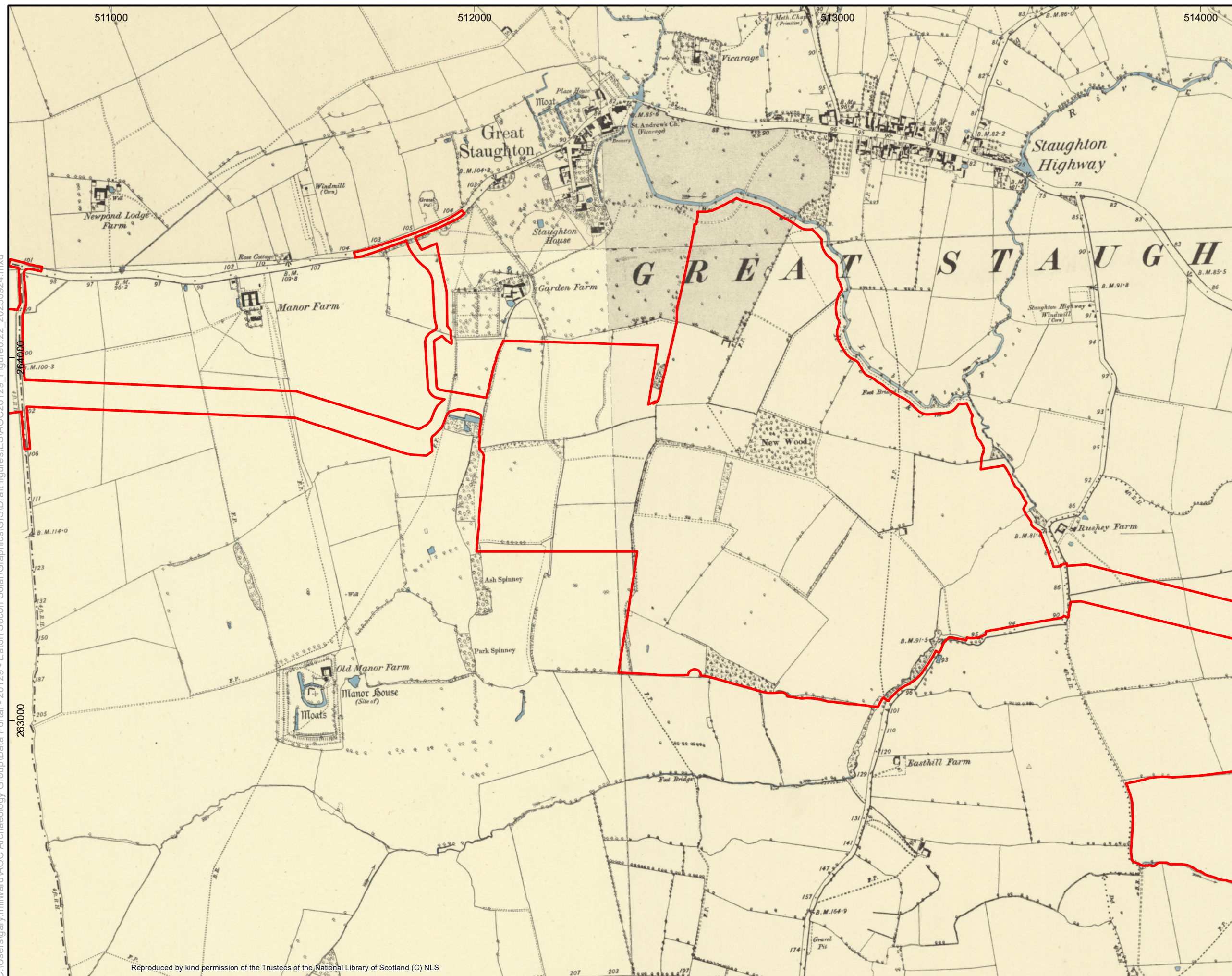


SYSTEM  
Coordinate System: British National Grid  
Projection: Transverse Mercator  
Datum: OSGB 1936

SCALE  
1:10,000 @ A3







## Figure

6-22

**Drawn/checked:**

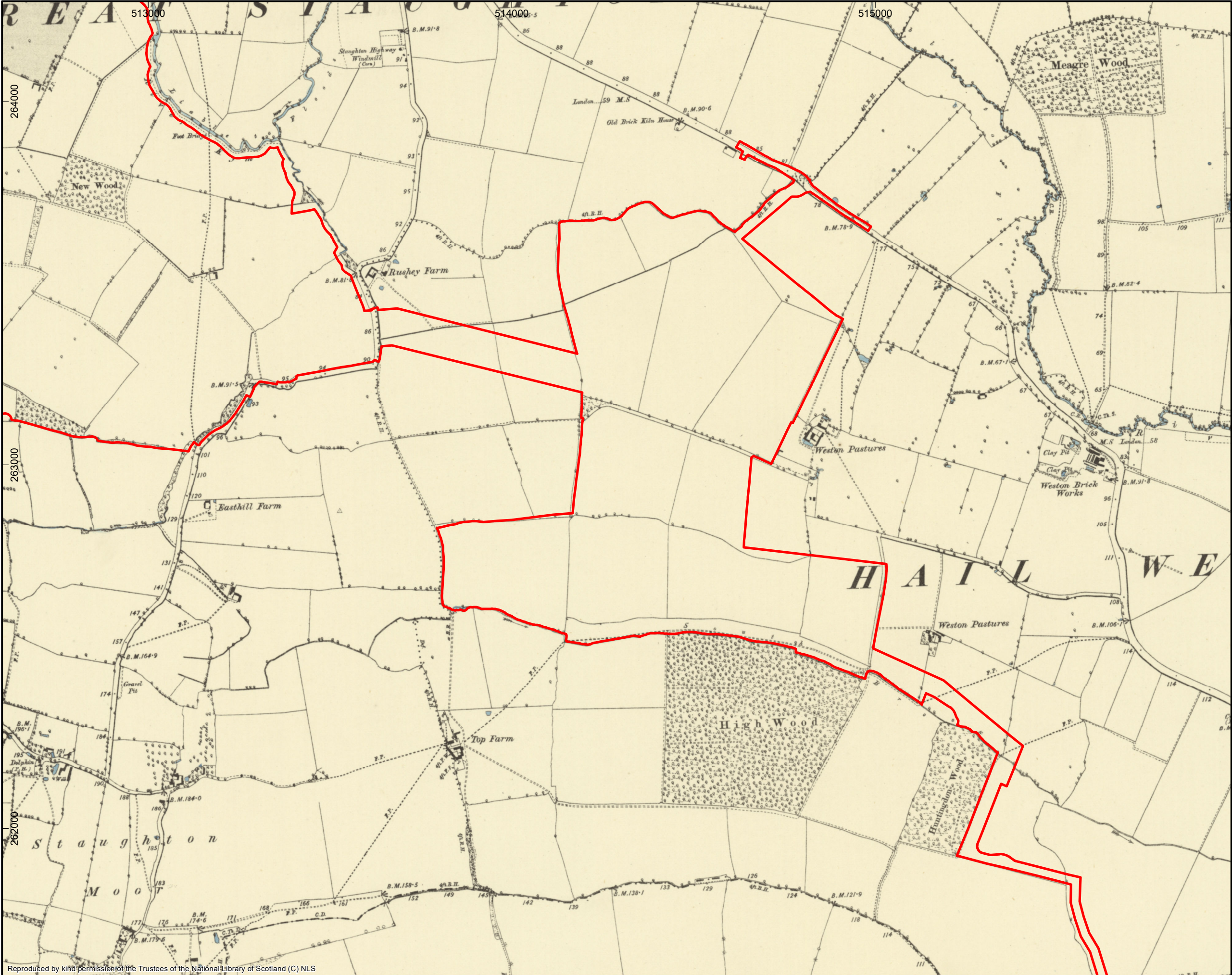
**DWG no:**

**AOC Project No.:**





C:\Users\gary.millward\AOC Archaeology Group\Data Portal - 26129 - Eaton Socon Solar\Graphics\GIS\Draft figures\ESIAOC26129\_Figure6.23\_20250924.mxd



Figure

6-23

Site D overlain on extracts from OS maps dating 1883 to 1887

**Legend**  
Order Limits

FOR  
  
N/A

Drawn/checked:	26129
DWG no:	01/26129/PEIR/6.23/02
AOC Project No.:	GM/SO

**AOC** Archaeology Group  
(C) AOC Archaeology Group 2025



SYSTEM  
Coordinate System: British National Grid  
Projection: Transverse Mercator  
Datum: OSGB 1936

SCALE  
1:10,000 @ A3

SCALE  
0 500m





Figure

6-24

Northern part of Grid Connection  
overlain on extracts from  
OS maps dating 1883 to 1887

**Legend**  
Order Limits

FOR  
  
N/A

Drawn/checked:	26129
DWG no:	01/26129/ES/6.24/02
AOC Project No.:	GM/SO

**AOC**  
Archaeology  
Group  
(C) AOC Archaeology Group 2025



SYSTEM  
Coordinate System: British National Grid  
Projection: Transverse Mercator  
Datum: OSGB 1936

SCALE  
1:10,000 @ A3







Figure

6-25

Southern part of Grid Connection  
overlain on extracts from  
OS maps dating 1883 to 1887

**Legend**  
Order Limits

FOR  
  
N/A

Drawn/checked:	26129
DWG no:	01/26129/PEIR/6.25/02
AOC Project No.:	GM/SO

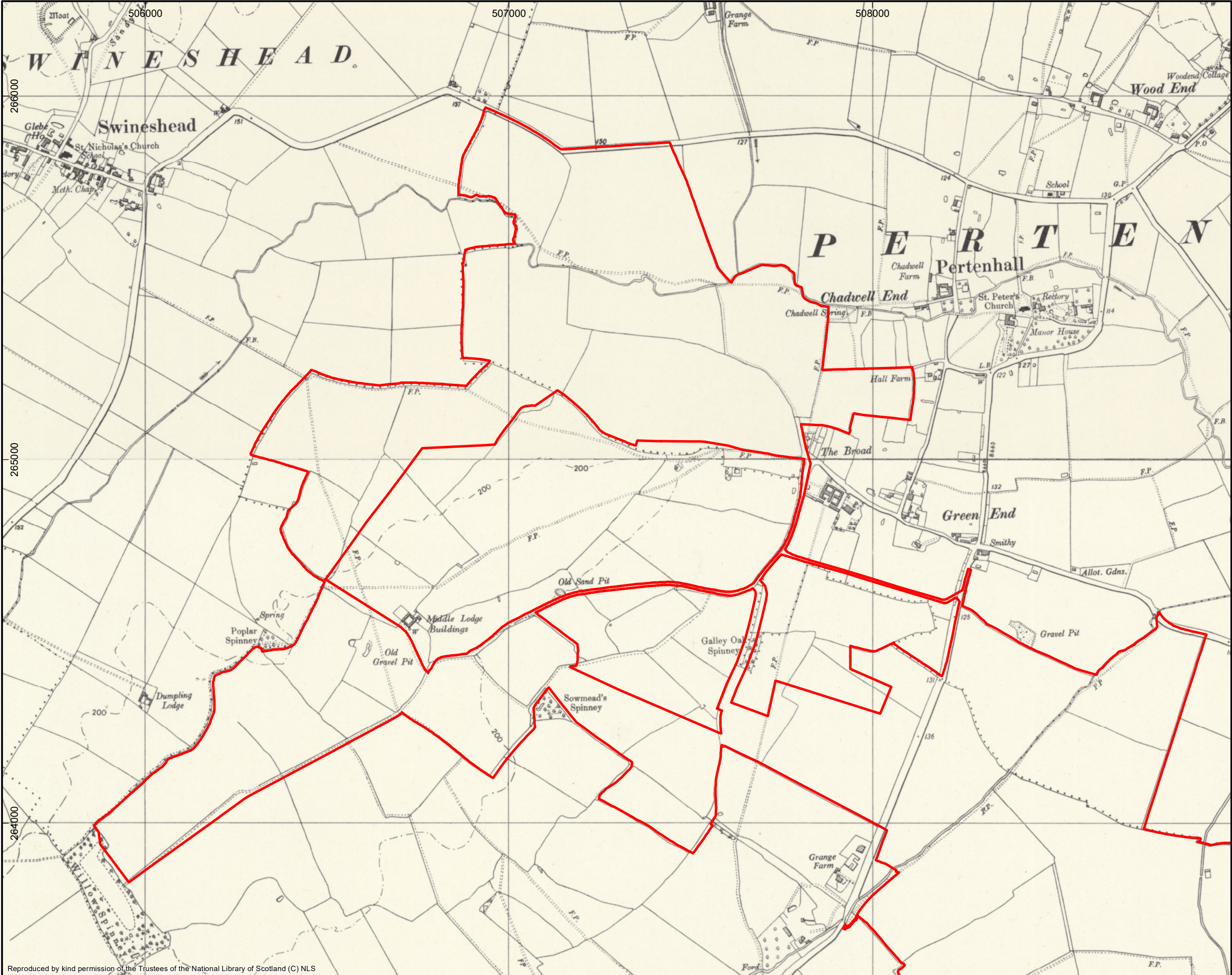


SYSTEM  
Coordinate System: British National Grid  
Projection: Transverse Mercator  
Datum: OSGB 1936

SCALE  
1:10,000 @ A3







Figure

6-26

Site A overlain on extracts from OS maps dating 1958 to 1970

**Legend**  
Order Limits

FOR  
  
N/A

Drawn/checked:	26129
DWG no:	01/26129/ES/6.26/02
AOC Project No.:	GM/SO

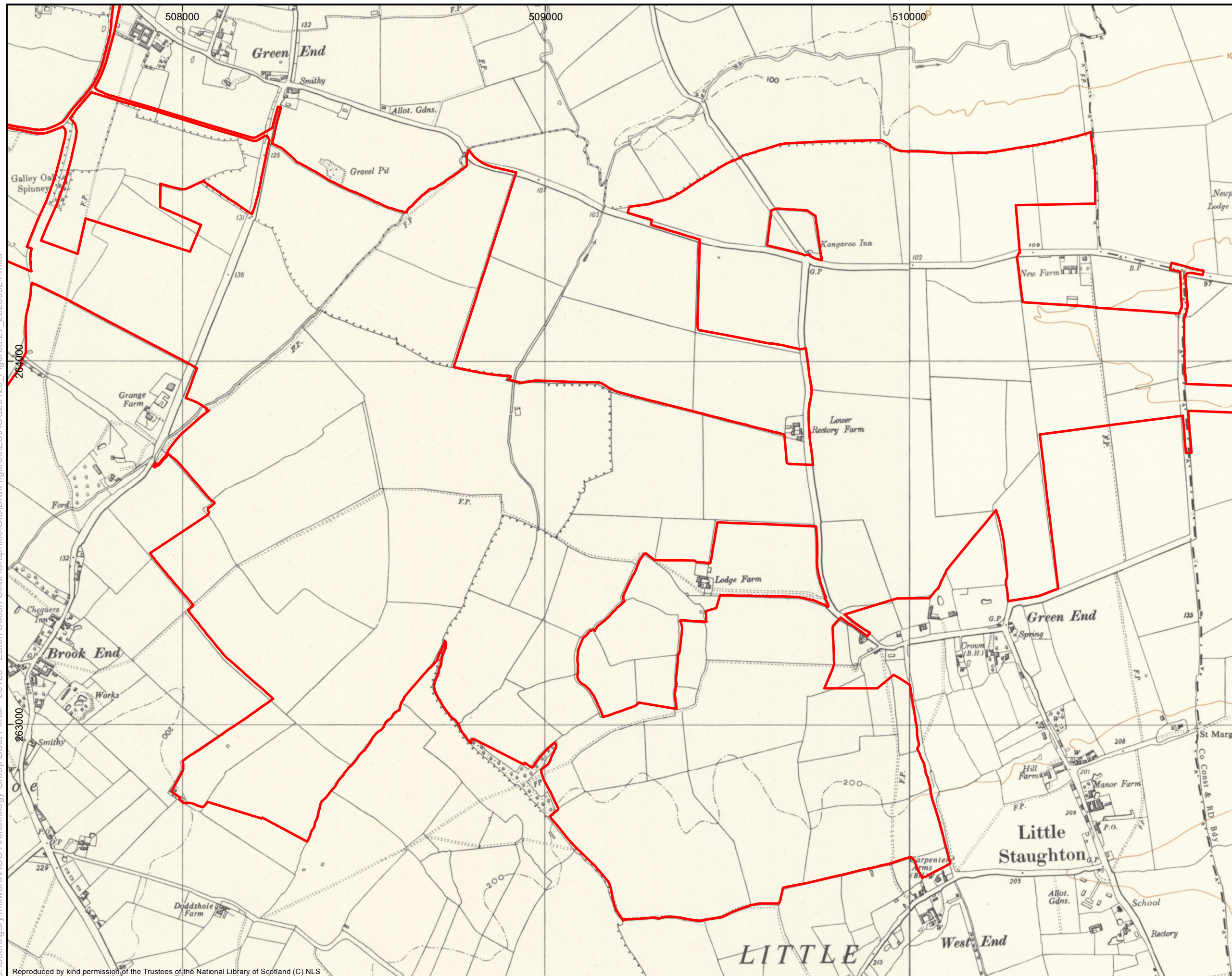


SYSTEM  
Coordinate System: British National Grid  
Projection: Transverse Mercator  
Datum: OSGB 1936

SCALE  
1:10,000 @ A3







Figure

6-27

Site B overlain on extracts from  
OS maps dating 1958 to 1970

### Legend

☐ Order Limits

FOR

N/A

<b>Drawn/checked:</b>	26129
<b>DWG no:</b>	01/26129/ES/6.27/02
<b>AOC Project No.:</b>	GM/SO



(C) AOC Archaeology Group 2025



SYSTEM

Coordinate System: British National Grid  
Projection: Transverse Mercator  
Datum: OSGB 1936

SCALE 1:10,000 @ A3

SCALE

0 500m





Figure

Site C overlain on extracts from OS maps dating 1958 to 1970

Legend  
Order Limits

FOR  
N/A

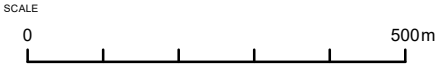
Drawn/checked:	26129
DWG no:	01/26129/ES/6.28/02
AOC Project No.:	GM/SO

**AOC**  
Archaeology  
Group  
(C) AOC Archaeology Group 2025



SYSTEM  
Coordinate System: British National Grid  
Projection: Transverse Mercator  
Datum: OSGB 1936

SCALE  
1:10,000 @ A3





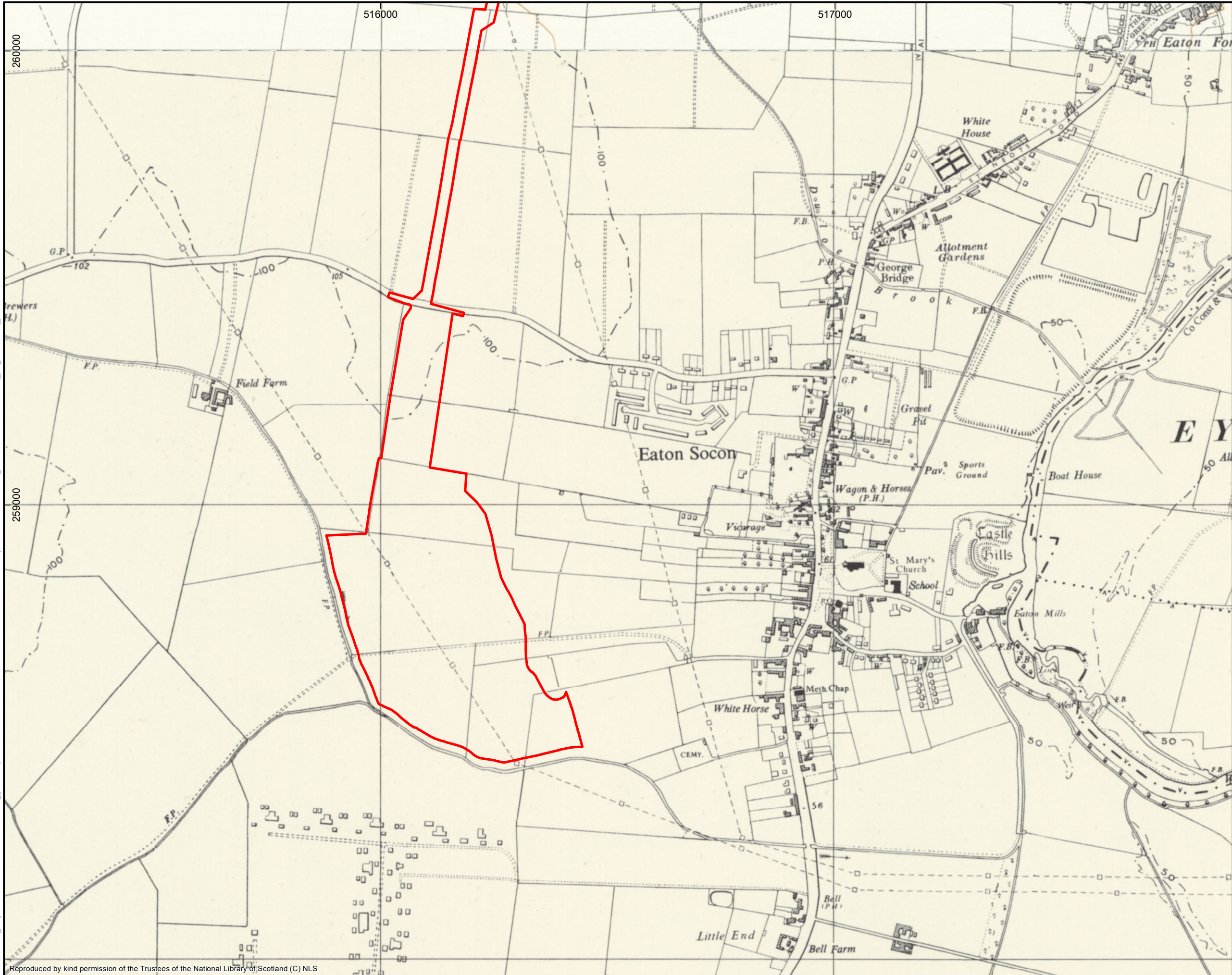











C:\Users\gary.millward\AOC Archaeology Group\Data Portal - 26129 - Eaton Socon Solar\Graphics\GIS\Draft figures\ES\AOC26129\_Figure6.31\_20250924.mxd



Reproduced by kind permission of the Trustees of the National Library of Scotland (C) NLS

Figure		6-31	
Southern part of Grid Connection overlay on extracts from OS maps dating 1958 to 1970			
<b>Legend</b> Order Limits			
FOR  N/A			
Drawn/checked:		26129	
DWG no:		01/26129/ES/6.31/02	
AOC Project No.:		GM/SO	
 (C) AOC Archaeology Group 2025			
			
SYSTEM Coordinate System: British National Grid Projection: Transverse Mercator Datum: OSGB 1936			
SCALE		1:8,000 @ A3	
SCALE			



C:\Users\gary.millward\AOC Archaeology Group\Data Portal - 26129 - Eaton Socon Solar\Graphics\GIS\Draft figures\ES\AOC26129\_Figure6.32\_20250924.mxd

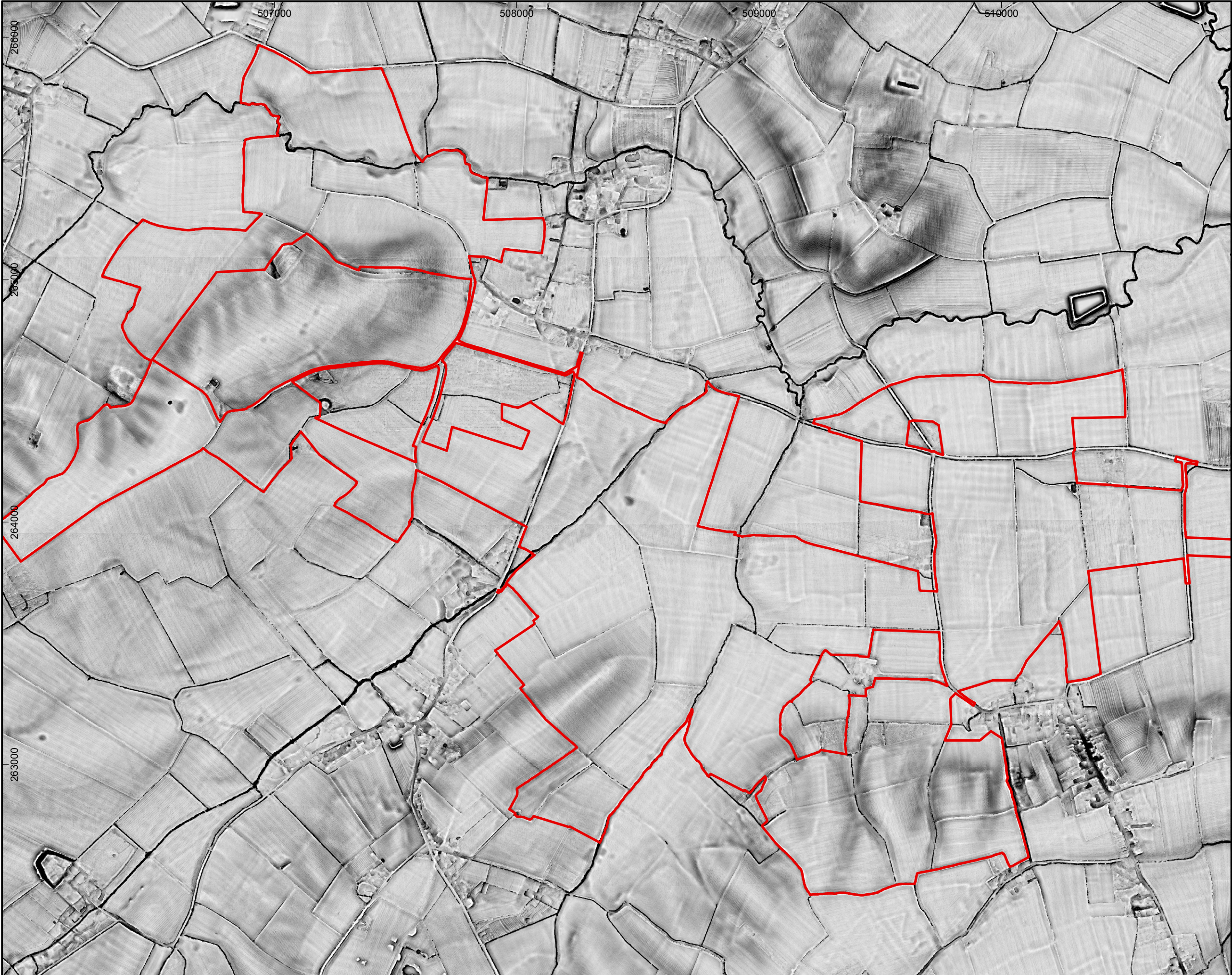





Figure		6-32	
Sites A and B overlay on processed LiDAR imagery (Visualisation for Archaeological Topography)			
<b>Legend</b> Order Limits			
FOR			
N/A			
Drawn/checked:		26129	
DWG no:		01/26129/ES/6.32/02	
AOC Project No.:		GM/SO	
 (C) AOC Archaeology Group 2025			
			
SYSTEM Coordinate System: British National Grid Projection: Transverse Mercator Datum: OSGB 1936			
SCALE		1:15,000 @ A3	
SCALE			



C:\Users\gary.millward\AOC Archaeology Group\Data Portal - 26129 - Eaton Socon Solar\Graphics\GIS\Draft figures\ES\AOC26129\_Figure6.33\_20250924.mxd

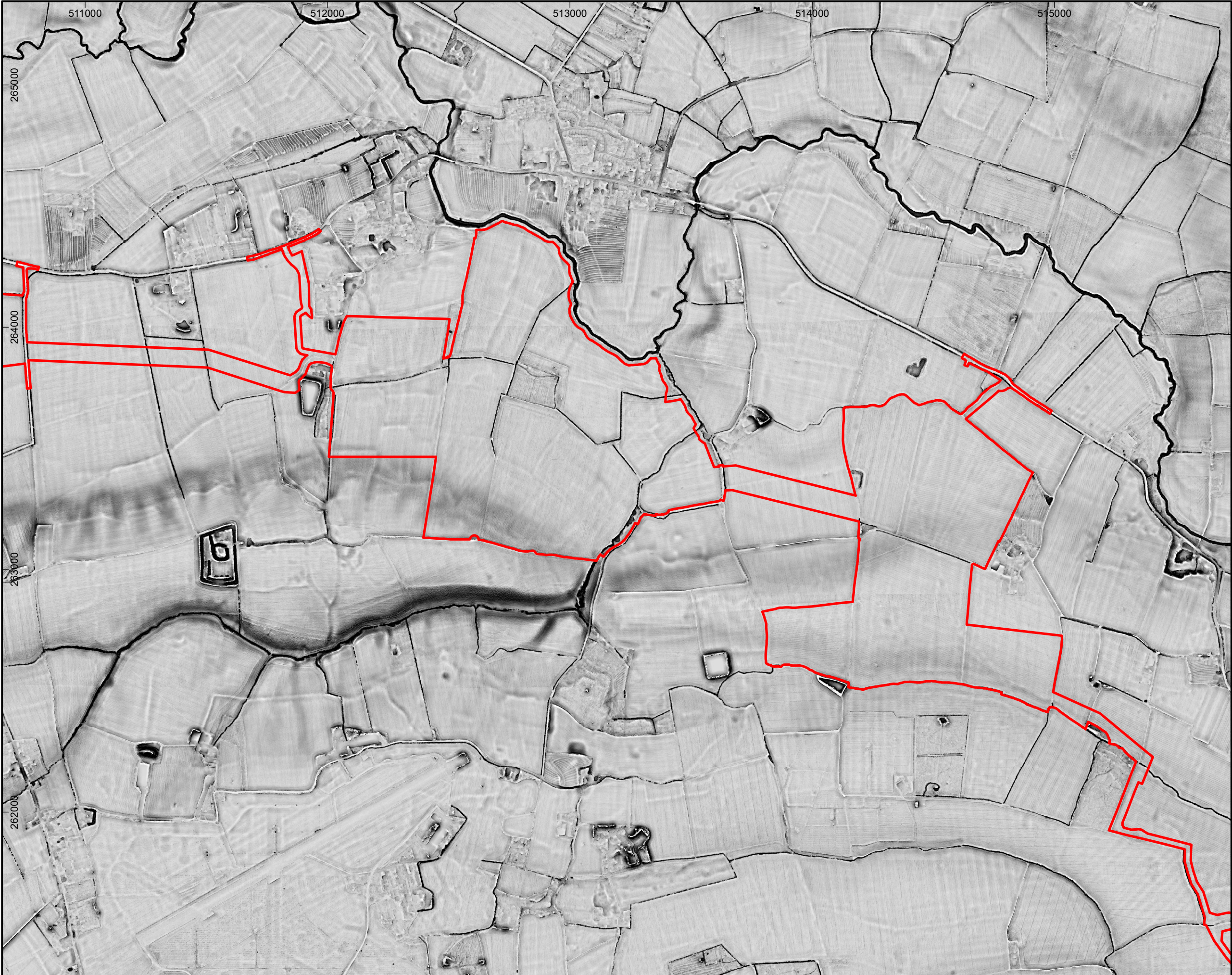


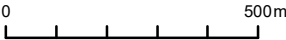


Figure		6-33	
Sites C and D overlain on processed LiDAR imagery (Visualisation for Archaeological Topography)			
<b>Legend</b> Order Limits			
FOR  N/A			
Drawn/checked:		26129	
DWG no:		01/26129/ES/6.33/02	
AOC Project No.:		GM/SO	
 (C) AOC Archaeology Group 2025			
			
SYSTEM		Coordinate System: British National Grid Projection: Transverse Mercator Datum: OSGB 1936	
SCALE		1:15,000 @ A3	
SCALE			



C:\Users\gary.millward\AOC Archaeology Group\Data Portal - 26129 - Eaton Socon Solar\Graphics\GIS\Draft figures\ES\AOC\26129\_Figure6.34\_20250924.mxd

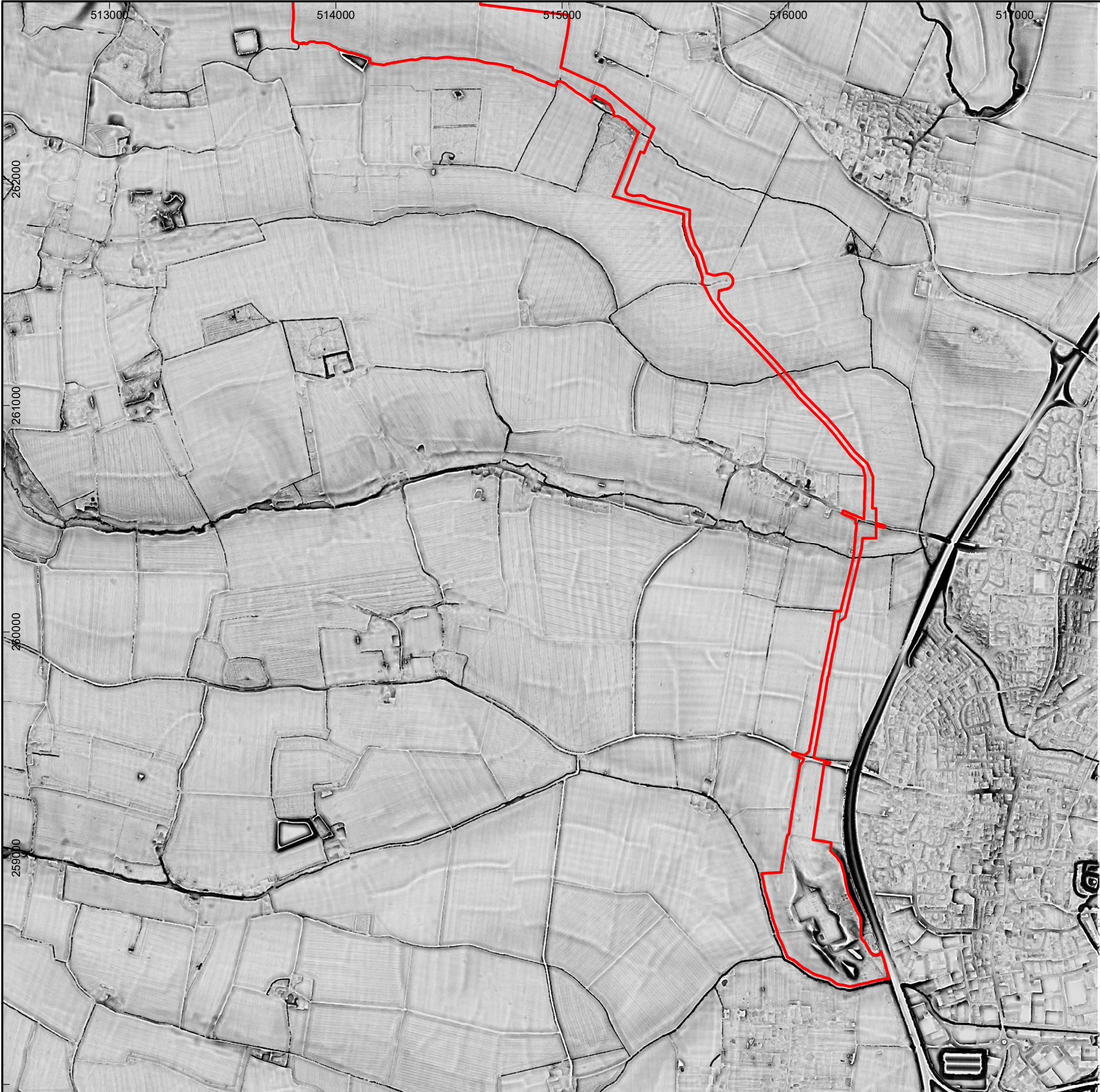


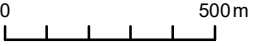


Figure		6-34	
Grid Connection overlain on processed LiDAR imagery (Visualisation for Archaeological Topography)			
<b>Legend</b> Order Limits			
FOR			
N/A			
Drawn/checked:		26129	
DWG no:		01/26129/ES/6.34/02	
AOC Project No.:		GM/SO	
 (C) AOC Archaeology Group 2025			
			
SYSTEM		Coordinate System: British National Grid Projection: Transverse Mercator Datum: OSGB 1936	
SCALE		1:18,000 @ A3	
SCALE			





6-35

### Field IDs within Sites A and B

### Legend

☐ Order Limits

FOR

N/A

Drawn/checked:

GM/SO

DWG no:

01/26129/ES/6.35/02
---------------------

AOC Project No.:

26129



(C) AOC Archaeology Group 2025



SYSTEM

Coordinate System: British National Grid  
Projection: Transverse Mercator  
Datum: OSGB 1936

SCALE

1:15,000 @ A3

SCALE



**Service Layer Credits:** Source: Esri, Maxar, Earthstar Geographics, and the GIS User Community



C:\Users\gary.millward\AOC Archaeology Group\Data Portal - 26129 - Eaton Socon Solar\Graphics\GIS\Draft figures\ES\AOC\26129\_Figure6.36\_20250924.mxd



Figure		6-36	
Field IDs within Sites C and D			
<div>Legend</div> <div><div></div>Order Limits</div>			
FOR			
N/A			
Drawn/checked:		GM/SO	
DWG no:		01/26129/ES/6.36/02	
AOC Project No.:		26129	
<div><div>AOC</div><div>Archaeology Group</div><div>(C) AOC Archaeology Group 2025</div></div>			
<div><div></div><div>N</div></div>			
SYSTEM			
Coordinate System: British National Grid Projection: Transverse Mercator Datum: OSGB 1936			
SCALE		1:10,000 @ A3	
SCALE		<div><div>0</div><div></div><div></div><div></div><div></div><div></div><div>500m</div></div>	